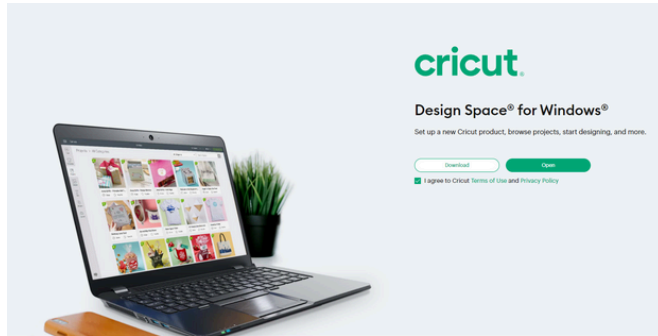


Designing in Cricut Design Space on Desktop



If you are using a computer, open your Bluetooth settings and select Cricut Explore. The pairing code is 0000.

You can also connect using the USB Cable to connect your computer and Cricut.

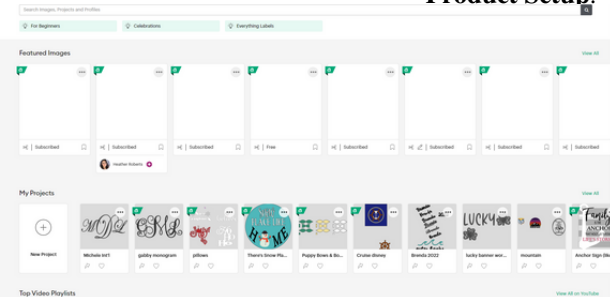
Download Design Space via the Cricut website.

Once downloaded, create or sign into your Cricut account.

Now start designing!

You will also have to connect the Cricut to your computer, you can follow the prompts in

Product Setup.



In Design Space, you can browse their projects or create a New Project.



You are able to add images and text here. Once happy with your design, select **Make It**.

Cricut EasyPress Mini Instructions



Visit the Cricut Help Center for Further Assistance!

What's Included:

- Cricut EasyPress Mini
- Zen BlueSafety Base
- Scoring stylus
- Weeder
- Tweezers
- Spatula
- Scissors
- Scraper
- Carrying Case
- Instructions

Can Be Used With:

- Cricut Iron On Designs
- Iron On Patches
- Iron On Transfers



Using HTV (Heat Transfer Vinyl) Iron On

Prepping the HTV to Press:



Lay the HTV sheet on a mat and press it down to ensure that it is fully adhered to the mat. The transfer sheet should be lined up with top left corner of the mat. Cut the HTV with any of the Cricut cutting machines.

Cutting HTV with the Cricut:



Save your design and then click on Make It. Make sure to cut it out in a mirror setting. Click the toggle so the Mirror setting is on.

Select Iron On as your material in the drop down settings and make sure your fine point blade is nice and sharp!

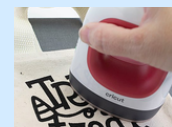
Weeding the HTV:



Weed out the words, images and edges. There should be a bottom layer of plastic that sticks out of both sides.

Applying HTV to the Material:

Once the images are weeded, it's time to apply them on to the items!

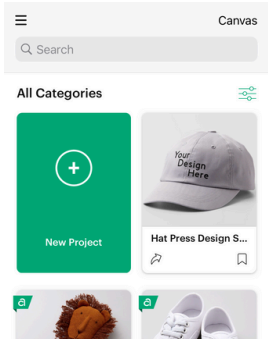
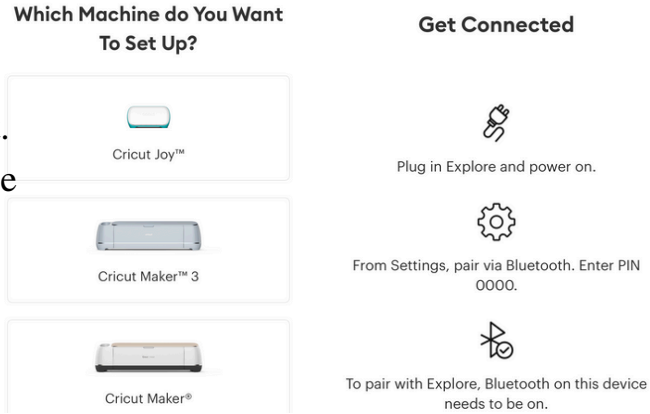


Center the image, then press it down really well. The plastic backing is sticky so it will stick to the item.

Cricut Design Space App

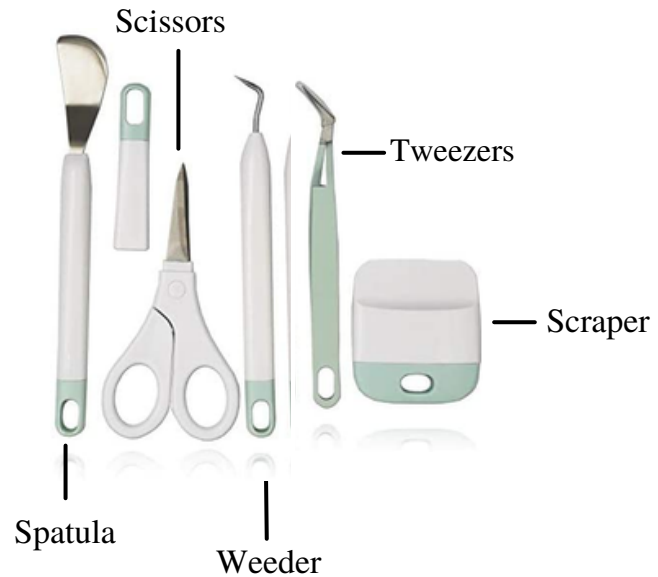
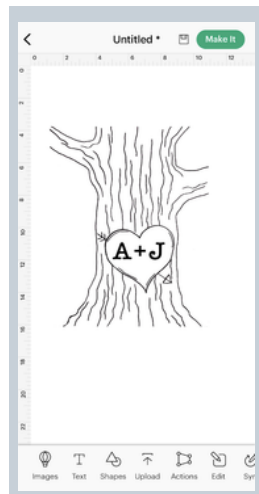
Go to the App Store and download the Cricut Design Space App
Once downloaded, create or sign into your Cricut account.

Once signed in, You have to connect the Cricut. Plug in the machine and follow the instructions to connect.



Once connected, you can browse through projects or create your own by selecting New Project.

Design Space is a grid that matches your mat. It will look like this. Once here, you can add any images or text that you would like to design with the Cricut.



Using the EasyPress Mini:

- 1.) Power Cricut EasyPress Mini on.
 - For flat base materials: find a flat, heat-resistant. Use a towel to protect surface.
 - For shapely materials that are hollow, like shoes and hats, use a form or folded towel inside to create a firm pressing surface.
 - Be sure to avoid flimsy ironing boards!
- 2.) Set temperature.
 - Use the Cricut Heat Guide to determine project settings. [cricut.com/heatguide](https://www.cricut.com/heatguide)
 - Powering machine ON sets temperature to Low. Press button again for Medium, and again for High.
 - Orange lights mean it's heating up.
 - Green lights mean temperature has been reached.
 - Use extreme caution. Machine operates at high temperatures that can cause burns.
- 3.) Set separate timer to recommended time.
- 4.) Preheat base material.
 - Move Cricut EasyPress Mini over application area for recommended time.
- 5.) Position design.
 - Make sure shiny side (clear liner) is facing up.
- 6.) Apply Heat.
 - Start timer and move Cricut EasyPress Mini continuously across design until timer reaches 0.
 - Before removing liner, refer to the Cricut Heat Guide to determine the peel temperature — warm or cool.

Quick Tips!

- Always use Cricut EasyPress Mini at room temperature.
- Before using Cricut EasyPress Mini ensure that fabrics and other base materials are completely dry.
- When not in use, always return Cricut EasyPress Mini to its Safety Base.
- Design sizes for application with Cricut EasyPress Mini range from the smallest area you can reach with the precision tip up to a surface area that is about 2X the heat plate. Recommended settings are optimized with the maximum sizes in mind:
 - Iron-on: 4" W x 3.5" L or 1.7" W x 5.25" L.
 - Infusible Ink: 2.75" W x 2.75" L or 1.625" W x 5" L.

