

Cricut Heat Press

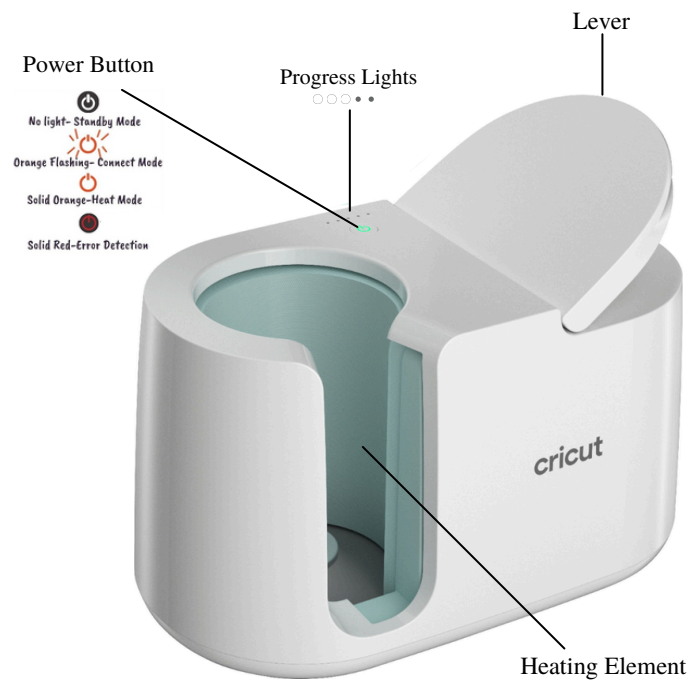


What's Included:

- Cricut Heat Press
- EasyPress Mat
- Heat Resistant Tape
- Carrying Case

What You Will Need:

**Cricut Mug
You Cannot Use Any Mug!
Infusible Ink & Cricut Weeding Tool
OR Sublimation Paper OR Infusible
Ink Markers**



Setting Up the Mug Press

You will need a laptop or desktop computer for this step!

The Mug Press needs to be able to connect to your computer with a USB port. The Mug Press will come with a USB cable and a connector cable for set up.

1. Open up Cricut Design Space on a computer and click on the three white lines in the upper left hand corner. You'll get your settings drop down.
2. Click on **New Machine Setup**.
3. Click on Cricut EasyPress and then on the next screen click on the picture of the mug press.
4. Next you will be prompted to plug in the Cricut Mug Press and to turn it on.
5. The next screen then tells us to connect the Mug Press to the computer. Plug the supplied USB cord into my laptop first and the other end of the cord into the Cricut Mug Press on the backside.
6. Once it reads the machine, click on **Continue** and you'll get some screens about updates.
7. And then one that says **"That's It!"** and that's it, the Cricut mug press is ready to use.

How to Use the Heat Press:



1. Insert mug by handle.



2. Ensure heat plate covers design.



3. To start transfer, press lever.



4. Remove, then cool on heat-safe surface.

A mug will take about 6 minutes to finish pressing. More white lights will light as the time progresses until all 5 are lit. Then they will start blinking and the press will beep.

**THE MUG WILL BE HOT!!!
Lift Lever and place the mug on an EasyPress
Mat to let cool for 15-30 minutes.**

Once cool, pull all the tape off and then remove the plastic backing.



Prepping the Infusible Ink to Press



Lay the transfer sheet on a mat and press it down.

Cut the Infusible Ink transfer sheet with any of the Cricut cutting machines.

Remove the sheet from the mat by peeling the mat off the sheet.

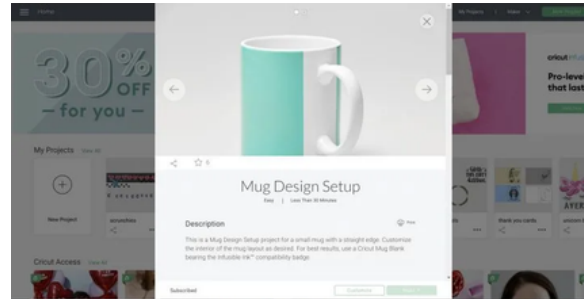
Weed out the words, images and the edge. There should be a bottom layer of plastic that sticks out of both sides.

You'll want to trim the designs so there is only about 1/2 inch of plastic on the sides. This helps prevent dust or hair from getting caught under the plastic and getting infused into the mug!

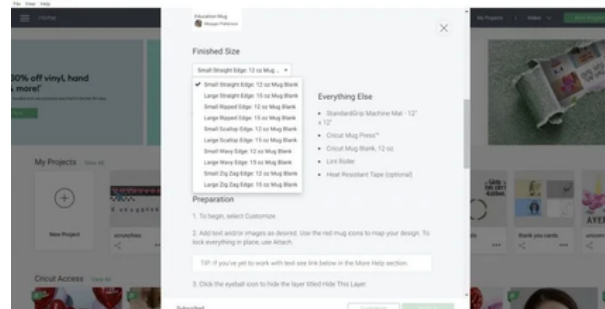


Designing in Cricut Design Space

Ideal for Silhouettes and clip art
Within Projects you can find the Mug Design Setup.



Cricut has made it really easy to design with an all in one mug template.



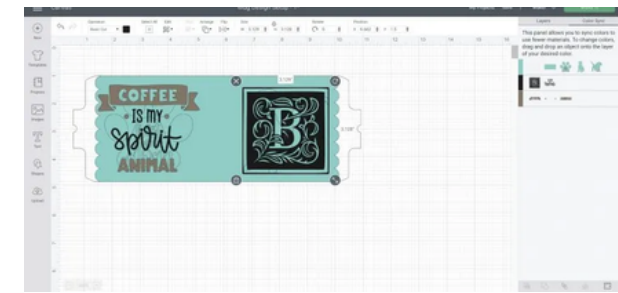
If you scroll down, there will be a drop down menu to pick what you want to make.

It has both the 12 oz and 15 oz mug sizes to choose from and then edge designs.

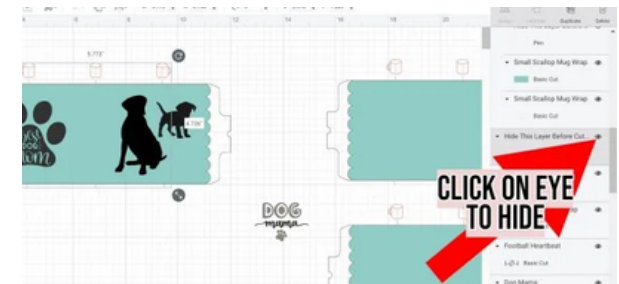
You can pick a straight edge, ripped edge, scallop edge, wavy edge, and zip zag edge.



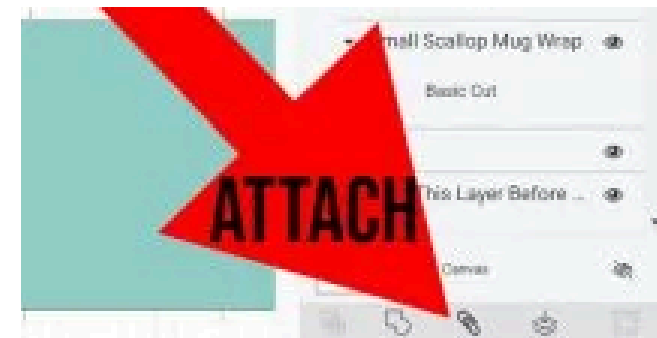
Click on Customize and the mug template will be brought onto your canvas.



Find images or add text of what you want to add to your mug and size it to fit on the provided template. One thing about Infusible Ink is you don't want too intricate of images because sometimes they don't weed easily.



Once you have the images centered below the lines, you'll need to hide the guide layer. It even says on that layer "Hide This Layer". Click on the layer and then on the eye to hide it.



Then with everything selected, click on **Attach** in the lower right-hand corner. This will guarantee that all of the layers print together.

Applying Infusible Ink to the Mug

Once the images are weeded, it's time to apply them on to the mugs!



Once the images are weeded, it's time to apply them on to the mugs!

Center the image, then press it down really well. The plastic backing is sticky so it will stick to the mug.

Tip: You'll want the infusible ink at least 1/2 inch away from the handle to ensure a great pressed product.

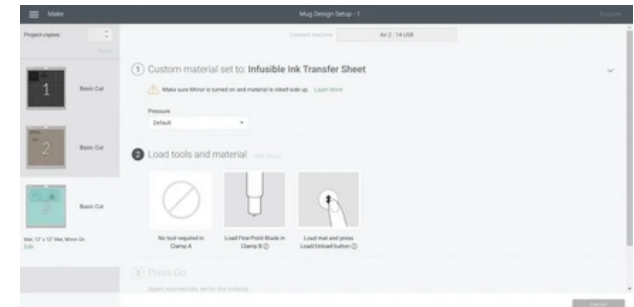
To ensure the sides of the plastic backing are adhered, tape all the sides with the heat resistant tape.

Now for the wrap around mug, the tabs will fold over each other under the handle.

Use the heat resistant tape to ensure that it is on well.

Cutting Infusible Ink with the Cricut

Save your design and then click on Make It. As with all Cricut Infusible Ink, you'll want to cut it out in a mirror setting. Click the toggle so the Mirror setting is on.



Select Infusible Ink transfer sheet as your material in the drop down settings and make sure your fine point blade is nice and sharp!

Designing with Infusible Ink Markers



The most basic is cutting a piece of **laser copy paper** the size of the mug you are using and using Infusible Ink markers to free hand a drawing.

You can use your Cricut to cut out the exact size of the mug press template and then have fun coloring anything on it you want. **Just be careful that it will be a mirror image.** So I would caution away from words and other images that are one-directional because they will press on backward!